

# STAX | LYFE

## SUITE - 1B

1 BED | 1 BATH | 678 sq.ft.

FLOORS: 2,3 & 5

### KITCHEN/LIVING/DINING

19'0" X 17'3"

### BALCONY

4'3" X 7'5"

### PRIMARY BEDROOM

9'9" X 11'5"



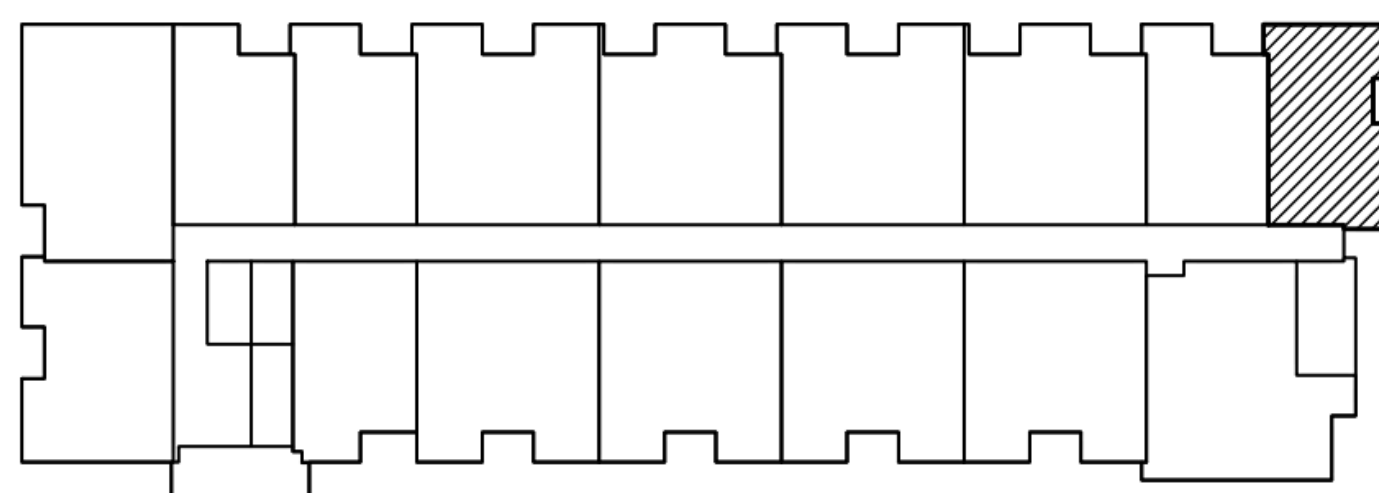
GROSS SUITE AREA  
(BASED ON TARION STANDARD)

63.0 sq.m      678 sq.ft.

BALCONY AREA

2.9 sq.m      31.6 sq.ft.

TOTAL UNITS PER BLDG = 2



KEY PLAN - 3RD & 4TH FLOORS