

SUITE - 1F

1 BED | 1 BATH | 702 sq.ft.

FLOORS: 6

KITCHEN

8'6" X 11'3"

LIVING/WORK SPACE

11'1" X 20'0"

TERRACE

4'1" X 32'9"

TERRACE

4'1" X 25'3"

PRIMARY BEDROOM

9'4" X 11'5"



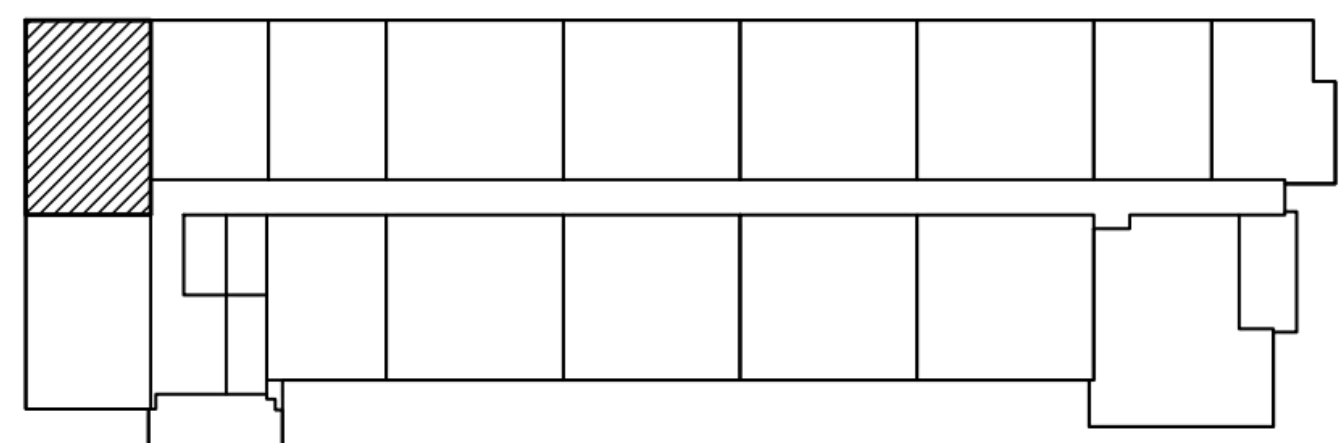
GROSS SUITE AREA
(BASED ON TARIION STANDARD)

65.2 sq.m 702 sq.ft.

BALCONY AREA

22.3 sq.m 240.0 sq.ft.

TOTAL UNITS PER BLDG = 1



KEY PLAN - 6TH FLOOR