

# STAX | LYFE

## SUITE - 1G

1 BED | 1 BATH | 548 sq.ft.

FLOOR: 6

### KITCHEN/DINING

9'6" X 12'3"

### LIVING

9'6" X 12'11"

### TERRACE

19'8" X 4'1"

### PRIMARY BEDROOM

9'3" X 11'7"



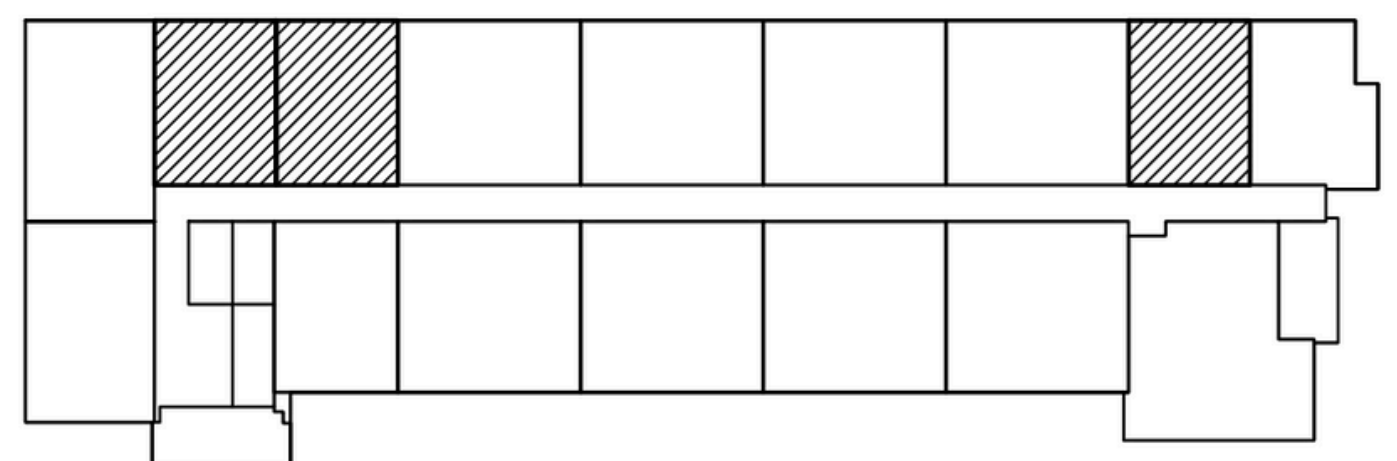
GROSS SUITE AREA  
(BASED ON TARION STANDARD)

50.9 sq.m    548 sq.ft.

BALCONY AREA

7.6 sq.m    81.4 sq.ft.

TOTAL UNITS PER BLDG = 3



KEY PLAN - 6TH FLOOR