

STAX | LYFE

SUITE - 2F BF

2 BED | 2 BATH | 1040 sq.ft.

FLOORS: 2,3 & 4

KITCHEN

9'7" X 9'0"

LIVING

10'0" X 15'1"

DINING

12'6" X 11'2"

BALCONY

5'4" X 9'4"

PRIMARY BEDROOM

9'2" X 11'8"

W.I.C

4'9" X 5'0"

BEDROOM 2

8'10" X 10'7"



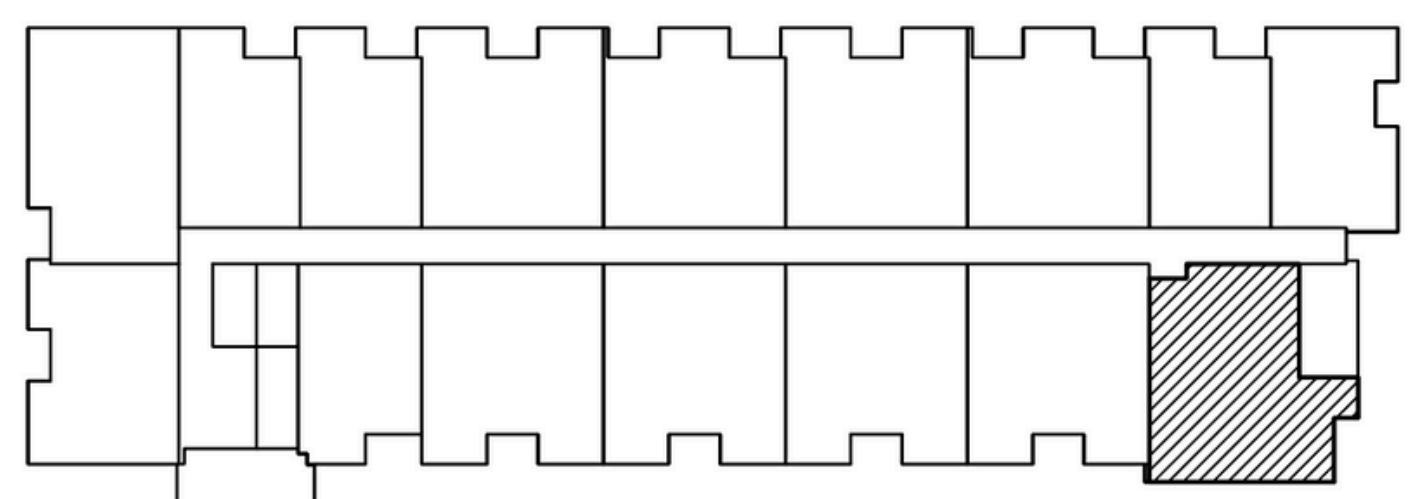
GROSS SUITE AREA
(BASED ON TARIION STANDARD)

96.6 sq.m 1,040 sq.ft.

BALCONY AREA

4.6 sq.m 49.5 sq.ft.

TOTAL UNITS PER BLDG = 3



KEY PLAN - 2ND, 3RD, 4TH FLOORS