

STAX | LYFE

SUITE - 2N BF

2 BED | 2 BATH | 1010 sq.ft.

FLOORS: 5 & 6

KITCHEN

9'7" X 9'0"

DINING

12'6" X 11'2"

LIVING

10'0" X 15'1"

BALCONY

5'4" X 9'3"

PRIMARY BEDROOM

9'2" X 12'3"

W.I.C

4'9" X 5'0"

BEDROOM 2

8'10" X 9'5"



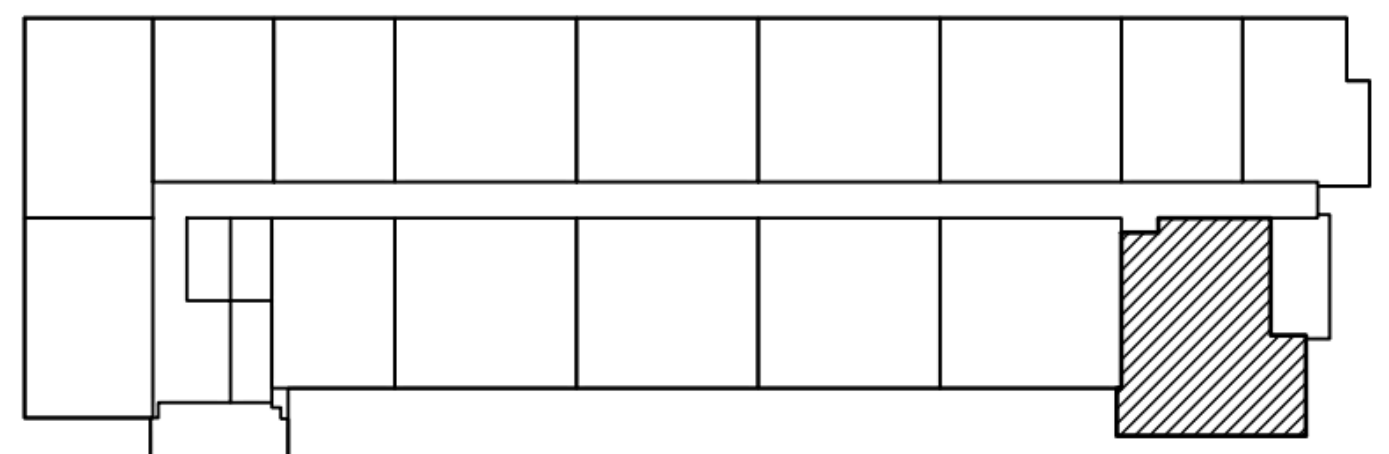
GROSS SUITE AREA
(BASED ON TARIION STANDARD)

93.8 sq.m 1,010 sq.ft.

BALCONY AREA

4.6 sq.m 49.5 sq.ft.

TOTAL UNITS PER BLDG = 2



KEY PLAN - 5TH, 6TH FLOORS